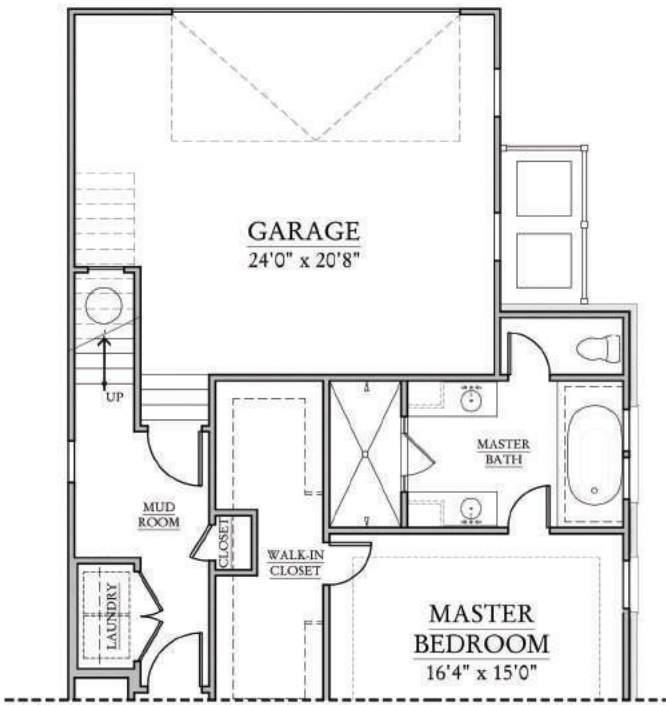


# THE BATTERY

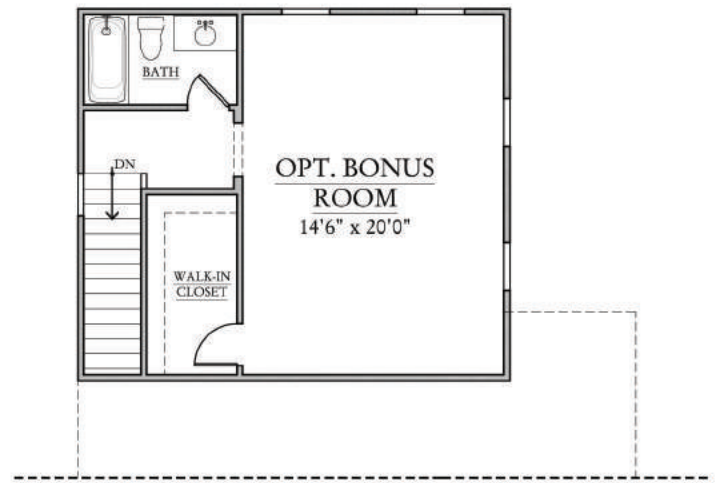
AT MARKET COMMON  
by Dock Street Communities

## THE VIRGINIA

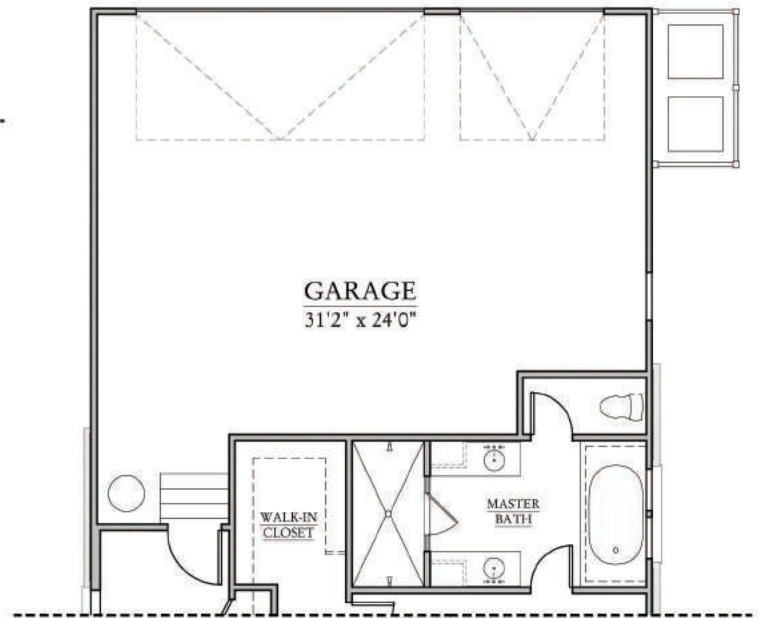
3 BR • 2.5 BA • 2 LEVELS • COVERED PORCH • TERRACE • ATTACHED 2-CAR GARAGE



FIRST FLOOR FOR OPT. BONUS



OPTIONAL BONUS



OPT. GARAGE WORKSHOP/GOLFCART STORAGE

